

Imaging

Assessment of atherosclerosis: the role of flow-mediated dilatation

Marietta Charakida¹, Stefano Masi¹, Thomas F. Lüscher², John J.P. Kastelein³, and John E. Deanfield^{1*}

¹Vascular Physiology Unit, Great Ormond Street Hospital for Children, NHS Trust, University College London, 30 Guilford Street, London WC1N 3EH, UK; ²Cardiology, Cardiovascular Center, University Hospital Zurich, Zurich, Switzerland; and ³Department of Vascular Medicine, Academic Medical Center, University of Amsterdam, Amsterdam, The Netherlands

Received 6 July 2010; revised 2 August 2010; accepted 23 August 2010; online publish-ahead-of-print 23 September 2010

This paper was guest edited by Prof. F. Van de Werf, Department of Cardiology, University Hospital Leuven, Leuven, Belgium

Evidence suggests that endothelial dysfunction is on the causal pathway for both atherogenesis and destabilization of established plaques. In this review, the role of flow-mediated dilatation (FMD) as a non-invasive method to assess endothelial function is discussed. Technical modifications and development of analysis software have significantly improved the variability of the method. Following a strict standardized protocol enables reproducible measurements to be achieved and export of the technique from specialized laboratories to population studies and multicentre settings. Endothelial function assessed by FMD has been shown to be affected by cardiovascular risk factors, to be related to structural arterial disease and to cardiovascular outcome, validating its use for studying the pathophysiology of arterial disease. Numerous studies have also demonstrated that it is responsive to physiological and pharmacological interventions. Flow-mediated dilatation provides unique opportunities in drug development programmes to assess an early rapidly responsive signal of risk or benefit, complementing endpoints of structural arterial disease and cardiovascular outcomes that take much longer and are more expensive.

Keywords

FMD • Endothelium • Risk factors

Introduction

Advances in the understanding of the vascular biology of atherosclerosis have revolutionized the clinical approach to its management. It is now clear that vascular disease begins in childhood and progresses silently for many years until its late clinical manifestations, which include myocardial infarction and stroke, occur. Dynamic changes in vascular biology characterize both the early pre-clinical phase and established atherosclerosis, and the vascular endothelium plays a key role in this process.¹ The latter is optimally situated to act as a signal transducer between the circulation and the vessel wall and produces a wide range of factors that regulate vessel tone, cell adhesiveness, vascular growth, and coagulation.² Alterations in endothelial function precede the development of morphological changes and contribute to atherosclerotic lesion development and progression.^{3–6} These disturbances in endothelial function also participate in the inflammatory changes

in the atherosclerotic artery, which destabilize established plaques to increase the risk of clinical events.¹

Appreciation of the role of the vascular endothelium throughout the atherosclerotic disease process has led to the development of a range of invasive and non-invasive techniques which permit evaluation of different aspects of its function.⁷ These methods have provided insights into the pathophysiology of atherosclerosis. They have also provided opportunities to study the impact of interventions on endothelial function and add greatly to objective assessment of response to treatments in clinical trials.

The present review examines the role of flow-mediated dilatation (FMD), which is the most widely used non-invasive ultrasound method to assess endothelial function. The evolution of the technique to provide accurate and reproducible data is described together with its value and limitations in clinical practice and its role in drug development programmes.

* Corresponding author. Tel: +44 20 7405 9200, Fax: +44 20 7813 8263, Email: j.deanfield@ich.ucl.ac.uk

Published on behalf of the European Society of Cardiology. All rights reserved. © The Author 2010. For permissions please email: journals.permissions@oxfordjournals.org

Clinical study of endothelial-dependent dilatation

The importance of the vascular endothelium in regulating vascular homeostasis was first recognized by its effect on vascular tone. Pioneering experimental work, in the 1980s, using isolated blood vessels, demonstrated that stimulation of rabbit aorta with acetylcholine resulted in relaxation that was dependent on the presence of an intact endothelium.⁸ This endothelium-dependent relaxation was shown to be mediated by nitric oxide (NO).⁸

Nitric oxide has numerous functions in the maintenance of arterial wall homeostasis, which are lost when the endothelium becomes dysfunctional. In clinical practice, the impact of NO bioavailability on vasomotion is most commonly studied and evidence suggests that it represents a barometer of other key functions of the endothelium. In 1986, the experimental observations of Furchgott were adapted for the study of endothelial function in patients undergoing cardiac catheterization.⁹ Infusion of acetylcholine in patients with coronary artery disease resulted in paradoxical vasoconstriction, whereas dose-dependent dilatation was observed in patients with 'smooth' coronary arteries. Other pharmacological agents can produce similar effects, as can an increase in flow induced by distal infusion of vasodilators such as adenosine and papaverine. In 1992, we reported a new method to perform the same experiment of FMD non-invasively in conduit arteries in the peripheral circulation.¹⁰ An increase in flow was induced by inflation and subsequent release of a sphygmomanometer cuff on the distal forearm and the impact of this 'physiological' stimulus on artery diameter above the elbow was assessed by high-resolution ultrasound. The FMD in the brachial and radial arteries is almost completely abolished by inhibitors of eNOS demonstrating its dependence on local NO bioavailability.¹¹ Many studies have subsequently shown impairment of FMD in response to a range of cardiovascular (CV) risk factors and its recovery after treatment. Anderson *et al.*¹² were the first to report a relationship between endothelial-dependent vasodilatation in the brachial and the coronary circulation using pharmacological agents in the coronary experiments and flow as a stimulus in the peripheral circulation. The coexistence of endothelial dysfunction in the coronary and brachial arteries was confirmed by Takase *et al.*¹³ using flow as a stimulus in both vascular beds with a high correlation. This suggests that endothelial function varies throughout the vasculature and, in conjunction with local haemodynamics and other factors, determines the development and progression of focal atherosclerosis. The measurement of endothelial function in the conduit arteries of the peripheral circulation by FMD enables study of the key aspects of vascular biology in pre-clinical subjects in whom invasive testing is not feasible.⁷

Flow-mediated dilatation methodology

While the concept of FMD is simple, measurement is challenging and involves systematic training to reach the plateau of the learning curve for both image acquisition and image analysis.¹⁴ Over the last 20 years, technical modifications and the development of analysis

software have greatly improved image acquisition and reduced method variability.

Subject preparation

A number of patient related and environmental factors have been shown to influence FMD, including mental stress, food, drugs, and temperature.^{15,16} Current guidelines recommend that subjects should have FMD measurement in a fasting state (8–12 h) and be studied in a quiet, temperature-controlled room.^{14,17} Tobacco use should be avoided for at least 4–6 h before the study and, for female individuals, the phase of the menstrual cycle should be reported, since hormonal changes may affect FMD results.^{18,19} Recent data, however, from population studies, demonstrate that the contribution of environmental factors to the variability of FMD is relatively small, and these should not be considered limiting factors for FMD assessment when the 'ideal' conditions cannot be achieved.²⁰

Image acquisition and site selection

Before initiating an FMD study, the subject should rest for >10 min to ensure stable conditions during scanning.²¹ In most cases, the brachial artery is the preferred site of measurement (usual diameter 2.5–5 mm). In pre-pubertal children, the femoral artery can be also studied, but is too large in older subjects. Arteries with smaller diameter are difficult to image accurately and reproducibly and very small changes in absolute diameter are consequently reported as large percentage changes. Longitudinal images of the brachial artery are obtained with a high-resolution ultrasound probe (usually 7–12 MHz), while the subject lies in supine position with the arm resting in a comfortable position in a cradle support. The interface between the near and far arterial wall and the vessel lumen has to be clearly defined. Brachial diameter measurements are obtained in end-diastole, identified by the onset of the R-wave.¹⁴ This period is preferred since functional characteristics of the artery such as vessel compliance, which influence the extent of systolic expansion, are unlikely to interfere with diameter measurements.¹⁴ Finally, anatomical landmarks have to be identified and the use of a stereotactic adjustable probe-holding device is necessary to ensure that image quality and plane are maintained throughout the study (*Figure 1*). To ensure that the examiner will be able to restudy the original position of the brachial artery when the subject is re-examined it is important that the positions of the arm, hand, and head are noted, along with the distance between the pneumatic cuff and the probe during the first examination. It is also helpful to make a thermal print of the arterial image for matching at subsequent visits.²²

Sphygmomanometer probe position

In the original description for brachial FMD measurement, the sphygmomanometer blood pressure cuff was placed on the forearm, and the brachial artery was imaged above the antecubital fossa. This remains the technique of choice, with placement of the cuff 1–2 cm distal to the elbow crease. Placement of the cuff more distally around the wrist results in lower reactive hyperaemia and lower FMD.²³ Placement of the occlusion cuff above the imaging probe has also been advocated.²⁴ Proximal cuff positioning may affect the magnitude and peak vasodilatory response and also

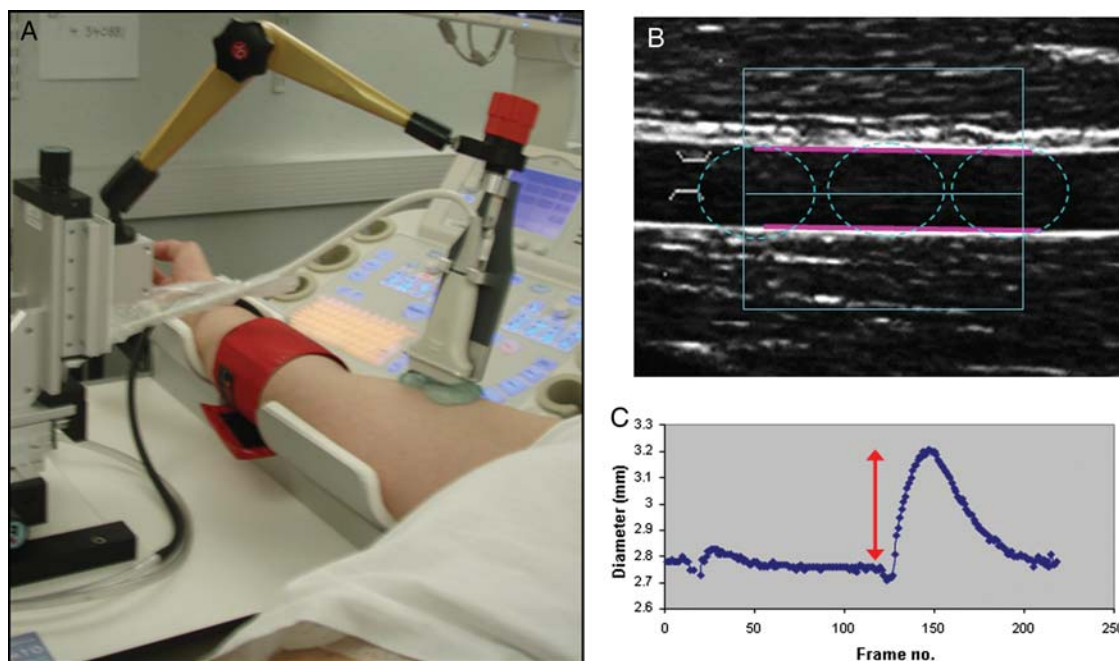


Figure 1 Set up for flow-mediated dilatation. (A) Recommended positioning of the sphygmomanometer cuff and use of the ultrasound probe holder. (B) Placement of the region of interest box using the edge detection analysis software for flow-mediated dilatation analysis. (C) Output generated by edge detection software that permits assessment of the vasodilatory response.

the time course of the peak response.²³ Although this has been advocated to enable the differentiation of subtle differences in an FMD response between different groups, there are major concerns about the validity of this approach. Imaging is challenging as the artery can collapse or distort during cuff inflation and the measured vasodilatation obtained with a proximal cuff placement is confounded by ischaemic mediators other than NO, making this approach inapplicable for studies where NO bioavailability is the focus of interest.²⁴ (Figure 1).

Cuff occlusion time

The original cuff occlusion duration of 5 min has stood the test of time. Subsequent studies have shown that cuff occlusion of <1.5 min is not followed by significant dilatation, whereas FMD increases linearly with increasing cuff occlusion times of up to 4.5 min.¹⁶ However, no further increase in maximal dilator response is seen when the cuff occlusion time is extended further to 10 min.¹⁶ The cuff is inflated to ≥ 50 mmHg above systolic pressure to occlude arterial inflow and this causes ischaemia and subsequent dilatation of downstream resistance vessels by autoregulatory mechanisms. On cuff deflation, reactive hyperaemia in the brachial artery occurs and results in vasodilatation if endothelial function is intact.²⁵

Flow-mediated dilatation analysis

A number of studies have demonstrated that maximal increase in diameter occurs ~ 45 –60 s after the release of the cuff. New semi-automatic measurement software is now available and this permits

faster, less subjective and more reproducible measurement of the arterial diameter compared with previously used manual measurement.²² Additionally, analysis software can characterize the whole profile of change in brachial artery diameter. It has been suggested that measurement of vasoconstriction, which can occur during cuff inflation may provide additional information on endothelial function and can complement FMD.²⁶

Characterization of the flow-mediated dilatation response

Flow-mediated dilatation is commonly reported as percentage change from the baseline diameter. Other parameters such as FMD at 60 s, area under the response curve and time to peak have also been used to describe the dilatory response.²² However, recent data show that per cent maximum FMD is the most reproducible measure and the best discriminator between health and disease.²² The influence of baseline diameter on FMD is important. Vessel size influences an FMD response, both by an impact on blood flow-related shear stress on the vessel wall, and also by being part of the calculation of percentage FMD. Absolute change in FMD (millimetre) is unrelated to resting vessel size. Percentage FMD is currently recommended, for interventional and longitudinal studies in which baseline vessel diameter remains stable over time.²² However, measurement and reporting of the baseline diameter, absolute change and percentage FMD in diameter are advisable. Equally important is the characterization of the hyperaemic stimulus for serial measurements and comparisons between groups.

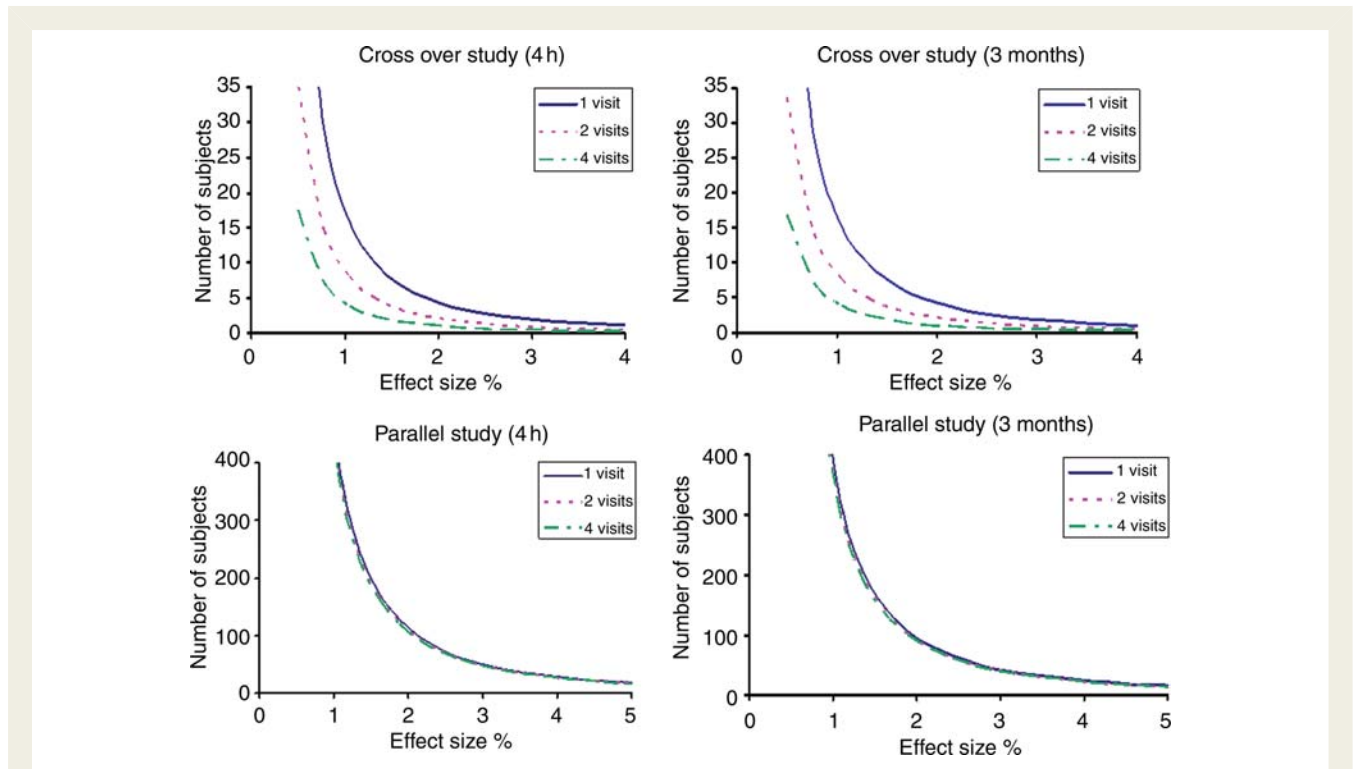


Figure 2 Power curves for estimating subjects required for flow-mediated dilation studies in crossover and parallel studies. Relation between effect on maximum percent change in flow-mediated dilation (%) and number of subjects required in crossover and parallel study designs at 80% power and 5% significance, 4–6 h and 3 months apart with three monitoring strategies: 1, 2, or 4 measures pre- and post-treatment.

Accuracy and reproducibility of flow-mediated dilation measurement

Studies of FMD have been performed with widely varying adherence to the key methodological issues outlined above. Reproducible FMD measurements, as with other imaging modalities, require careful attention to training, technique, and analysis. We have recently reported sources of variability from a single experienced centre.²² This has shown the feasibility of using FMD as an endpoint in serial studies and interventional trials. Power curves have been published to assist in the design of both crossover and parallel trials²² (Figure 2) and a nomogram of FMD values is available for use as a reference for various vessel sizes (Figure 3).²²

Pathophysiology of endothelial dysfunction

The healthy endothelium plays an important role in the maintenance of arterial homeostasis. Many of its functions are regulated by the bioavailability of the NO, including inflammation, adhesion, coagulation, smooth muscle cell proliferation, and vasomotion. In response to a range of triggers, endothelial dysfunction leads to a switch from a NO to a reactive oxygen species (ROS)-dominated inflammatory environment.¹ Flow-mediated dilation measures the vasomotor consequences of this change in arterial wall phenotype and can therefore be used to study the vascular biology of atherosclerosis as it evolves from childhood.²⁷

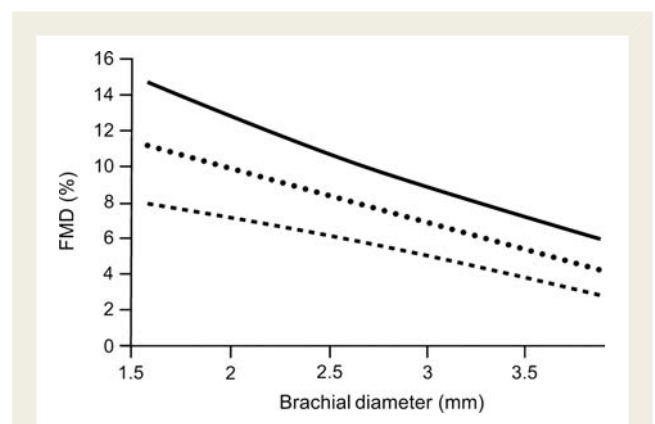


Figure 3 Nomogram for flow-mediated dilation according to the vessel baseline diameter. A negative linear association exists between baseline diameter and flow-mediated dilation. For a specific baseline diameter, flow-mediated dilation can be estimated. The black line shows the 75th percentile, the circle dashed line the 50th percentile, and the rectangular dashed line the 25th percentile of the population.

Relation to cardiovascular risk factors

Flow-mediated dilation has been shown to be adversely affected by classical CV risk factors. Gradual deterioration of FMD has been reported with ageing, and increased oxidative stress has been

suggested as the responsible mechanism.²⁸ The adverse effect of cholesterol on endothelial function was first reported in children with familial hypercholesterolaemia (FH) from as early as 8 years of age.²⁹ In this study, the degree of endothelial impairment correlated with both LDL and Lp(a) levels.²⁹ In non-genetic dyslipidaemias, increased cholesterol is associated with endothelial dysfunction, but the degree of impairment is relatively weak. Oxidized LDL has been identified as an important mediator of endothelial damage and subjects with a higher proportion of small dense LDL particles may have endothelial dysfunction, irrespective of total or LDL plasma concentrations.^{30–32} There is increasing interest in the role of HDL in the vascular biology of atherosclerosis. Recombinant HDL infusions have been shown to improve FMD and recent evidence suggests that the composition and function of HDL may have an important effect on the endothelium, in addition to plasma levels.^{33,34} Less information is available for the impact of hypertriglyceridaemia on endothelial function. Although lower FMD has been reported in young men with hypertriglyceridaemia, acute administration of triglycerides to normal individuals has not been shown to affect endothelial function.^{35,36} Dietary studies involving fat loads have shown variable acute responses of FMD, which may reflect differences in fat composition.^{37,38}

Diabetic patients demonstrate impaired endothelial function responses.³⁹ Potential mechanisms for the reduced NO bioavailability include the formation of ROS, activation of protein kinase C, decreased NO synthase expression, formation of advanced glycosylation end products and reduction in intracellular NADP.^{40,41} There are few studies of chronic endothelial function in type 1 diabetes.⁴² In young individuals, FMD impairment was related to duration of diabetes and LDL levels.³⁹ In other studies, the coexistence of microalbuminuria has been shown to have significant impact on endothelium-dependent responses.⁴³ In addition, high-glucose levels after acute loading has been associated with impaired endothelial function in some clinical studies but not all.^{44,45}

Blunted FMD responses have also been reported in subjects with hypertension and correlate with severity and duration of blood pressure elevation.^{46,47} Nevertheless, the pathogenesis of the association between endothelial dysfunction and hypertension remains unclear. A number of studies have suggested that in hypertensive subjects, increased levels of potent vasoconstrictors such as angiotensin II and endothelin-1 promote endothelial dysfunction. In others, endothelial dysfunction is regarded as the primary event causing arterial hypertension.^{48,49} Of interest, endothelial dysfunction has also been observed in children with secondary hypertension from renal disease.⁵⁰

Active and passive cigarette smoking have been shown to have a deleterious effect on FMD in a dose-dependent manner.⁵¹ In a recent study, the acute impairment in endothelial function after the use of cigarettes, nicotine spray, and snuff are related to nicotine levels.^{52,53} Nevertheless chronic endothelial dysfunction may result from a number of additional mechanisms including inflammation, increased oxidative stress, platelet activation, sympathetic tone, increased asymmetric dimethylarginine (ADMA) levels, and direct toxic effects of smoke components on endothelial cells.^{54–56} Impairment in FMD in pre-clinical subjects is related to the number of risk factors present. This mirrors the

known adverse impact of multiple co-existing risk factors on CV outcome. This, together with the relation of FMD to structural disease evolution and outcome (see below), supports the view that FMD is on the causal pathway for atherogenesis.

It is increasingly recognized that metabolic abnormalities secondary to obesity play an important role in the development of arterial disease. Endothelial dysfunction can be demonstrated in obese subjects from teenage years and is associated with visceral fat deposition. Flow-mediated dilatation can also be used to describe novel pathophysiological pathways involved in atherosclerosis. For example, Jarvisalo *et al.*⁵⁷ demonstrated the presence of endothelial dysfunction in adult men who were formula fed from infancy. Hingorani *et al.*⁵⁸ showed that brief exposure to a systemic inflammatory stimulus, typhoid vaccination, induced transient impairment in FMD. Similar findings have been found for childhood infection.⁵⁹ Unexpected sources of chronic inflammation such as periodontal disease are also associated with endothelial dysfunction.⁶⁰ In a randomized clinical trial, this was aggravated by acute inflammation associated with dental treatment but subsequently improved steadily as gum disease resolved.

Utility of flow-mediated dilatation

It is increasingly clear that the process of atherosclerosis begins many years before the clinical events so that there are opportunities for early intervention to alter the progression of disease and outcome. These require objective measures which can be used in clinical research to study arterial phenotype and the response to treatments. Cardiovascular outcome depends on both the burden of atherosclerosis and its 'functional state'. Endothelium is a key signal transducer of the inflammatory process, which may progress structural disease and destabilize established plaques causing clinical events. There has been considerable interest in the measurement of FMD both in pre-clinical subjects and in those with established vascular disease.^{27,30,61} The value of FMD as an intermediated phenotype and as an outcome measure in trials is based on its relationship with CV risk factors (see above), with progression of arterial disease and adverse prognosis.^{4,30,62}

Evidence that endothelial function is on the causal pathway for atherogenesis comes from a number of sources. Conduit artery endothelial dysfunction has been demonstrated in young children with monogenic disorders such as FH which are known to be associated with pre-mature atherosclerosis and clinical events.^{10,63} Furthermore, endothelial function measures are linked to early structural arterial disease. Juonala *et al.*³ described an inverse correlation between brachial artery endothelial function and carotid intima media thickness (CIMT) in a large cohort of subjects selected from the Cardiovascular Risk in Young Fins Study. Notably, the preservation of normal vascular function in this report was associated with an apparent protection from developing structural arterial disease, as defined by an increased CIMT.³ In another prospective study of middle aged civil servants (the Whitehall cohort), FMD was measured at two time points separated by an observation period of 6.2 years.⁴ Brachial FMD was the best predictor of the rate of progression of CIMT and was superior to Framingham risk score.⁴ The link between FMD and structural measures of arterial disease as well as its relationship to later CV events supports the use of FMD to follow the

evolution of arterial disease both cross-sectionally and in large populations throughout its natural history.^{61,64} Relationships with risk factors and treatment responses can be defined at a stage of disease when the atherosclerotic process is likely to be more amenable to intervention (see below).

The relationship between FMD and CV events has been studied in different populations, usually with higher CV risk levels.⁶⁴ Several, but not all, trials have shown incremental prognostic information from measurement of FMD in cohorts with established CV disease (Table 1). In the Cardiovascular Health Study, after adjustment for multiple CV risk factors, FMD remained an independent and significant predictor for a composite endpoint that included CV death, myocardial infarction, stroke, congestive heart failure, intermittent claudication, percutaneous intervention, and cardiac bypass graft surgery.⁶⁵ Similar findings were reported in the Multi Ethnic Study of Atherosclerosis (MESA).⁶⁶

Response to intervention

Measurement of FMD is non-invasive, repeatable, cheap, and easy to perform and thus attractive for use in determining both benefits and potential harm from CV interventions.

Life style modification approaches such as dietary interventions and exercise have revealed a moderate short-term improvement in FMD in both children and adults who achieve a stable reduction in body weight.^{67,68} Rapid improvements in endothelial function have also been described after bariatric surgery.^{69,70} There is evidence

that regular aerobic exercise improves endothelial function and that benefit is not limited to obese individuals. In the individual patient, however, the use of FMD to stratify risk and to follow clinical progress is limited by difficulties in standardizing techniques in clinical practice (see above) and by its intrinsic biological variability.

An increasing challenge is to prioritize drug targets and novel agents and to develop them for clinical use. Improvement in CV outcomes has been the requirement for approval of new treatments by regulatory bodies. However, the demonstration of benefit on CV morbidity and mortality requires very large, expensive trials that involve exposure of numerous subjects to potentially toxic novel agents. Most importantly, outcome measures are an inappropriate endpoint for assessment of treatments, which aim to target the evolution of pre-clinical disease from a young age.

There has, therefore, been great interest in the use of surrogate outcome measures of arterial structure and function, which are 'intermittent phenotypes' on the pathway to clinical atherosclerosis and its complications. Flow-mediated dilatation is affected by CV risk factors and improves in response to drugs that have proved benefit on CV outcomes such as statins, anti-hypertensive drugs (including ACE-inhibitors, angiotensin I receptor blockers, and calcium channel blockers)^{71–73} (Table 2). Clinical trials indicate that beneficial effects on endothelial function may not merely be attributable to LDL or blood pressure lowering.^{74–76} Anti-platelet regimes such as aspirin, clopidogrel, and glycoprotein IIb/IIIa inhibitors have been shown to have anti-inflammatory and antioxidant

Table 1 Flow-mediated dilatation and prognostic information

Study	Population	Follow-up	Conclusions	Limitations
Neunteufl <i>et al.</i> ⁸⁴	Seventy-three patients with CAD, chronic congestive heart failure or valvular defects requiring angiography	5 years	No independent prognostic importance of FMD	Low number of patients
Gokce <i>et al.</i> ⁸⁵	One hundred and ninety-nine patients with peripheral arterial disease before vascular surgery	1.2 years	FMD independently predicts long-term cardiovascular events	Only patients with already established atherosclerotic disease
Huang <i>et al.</i> ⁸⁶	Two hundred and sixty-seven patients with peripheral vascular disease referred for surgery	10 months	FMD predicts cardiovascular events	Only patients with already established atherosclerotic disease
Brevetti <i>et al.</i> ⁸⁷	One hundred and thirty-one patients with peripheral vascular disease	23 months	FMD is an independent predictor of events	Only patients with already established atherosclerotic disease
Modena <i>et al.</i> ⁸⁸	Four hundred post-menopausal and hypertensive women	67 months	After 6 months of anti-hypertensive treatment subjects without improvement of endothelial function identify a group with increased event rate	Only post-menopausal women with endothelial dysfunction at baseline evaluated without any other imaging tests
Chan <i>et al.</i> ⁸⁹	One hundred and fifty-two coronary patients	34 months	FMD is the dominant, independent predictor of cardiovascular outcome	Only patients with coronary artery disease
Fathi <i>et al.</i> ⁹⁰	Four hundred and forty-four patients deemed at risk of coronary artery disease	24 months	FMD is not an independent predictor of the cardiovascular outcome	Inclusion of a heterogenic population with several and serious diseases (renal dysfunction, diabetes, advanced coronary diseases)
Hu <i>et al.</i> ⁹¹	Two hundred and seventy-nine patients admitted for coronary angiography due to chest pain	16 months	Brachial FMD is an independent predictor for cardiovascular events	Only patients with chest pain studied before the angiographic evaluation

CAD, coronary artery disease.

Table 2 Recent randomized controlled studies and flow-mediated dilatation

Study	Population	Drug/Follow-up	Type of study	Outcome
Flammer <i>et al.</i> ⁹²	Thirteen patients with type 2 diabetes mellitus and hypertension	Losartan vs. atenolol, 4 weeks	Randomized, double blind, Crossover study	Losartan improves endothelial function in type 2 diabetic patients with hypertension compared with atenolol
Koh <i>et al.</i> ⁹³	Thirty-four hypertensive patients	Ramipril and candesartan, 4 months	Randomized, double-blind, placebo-controlled crossover trial	Ramipril in combination with candesartan improves blood pressure, endothelial function and adipocytokine profiles
Flammer <i>et al.</i> ⁹⁴	Eleven patients with rheumatoid arthritis	Ramipril, 8 weeks	Randomized, double-blind, crossover study	Ramipril for 8 weeks markedly improved endothelial function
Morimoto <i>et al.</i> ⁹⁵	Fifty patients with untreated essential hypertension	Amlodipine vs. Clinidipine, 24 weeks	Randomized trial	No differences in the vascular function between two drugs
Hamilton <i>et al.</i> ⁹⁶	Twenty-three statin-treated type 2 diabetic patients	Oral CoQ(10) vs. placebo, 12 weeks	Double-blind, crossover study	CoQ(10) supplementation improved endothelial dysfunction in statin-treated type 2 diabetic patients
Rawlings <i>et al.</i> ⁹⁷	Thirty men with stable atherosclerosis	Atorvastatin, rosuvastatin, 28 days	Randomized, double-blind study	Statins improved FMD
Ostad <i>et al.</i> ⁹⁸	Fifty-eight patients with CAD, LDL cholesterol of >100 mg/dL and endothelial dysfunction of the brachial artery	Atorvastatin (80 mg) vs. Atorvastatin + ezetimibe, 8 weeks	Double-blind trial	LDL cholesterol-independent effects of high-dose atorvastatin therapy account for the improvement of endothelium-dependent vasodilation in patients with stable CAD
Settergren <i>et al.</i> ⁹⁹	Thirty-nine patients with type 2 diabetes or IGT and stable CAD	Simvastatin and ezetimibe/simvastatin placebo or ezetimibe/simvastatin and simvastatin placebo, 6 weeks	Randomized, double-blind, controlled clinical trial	Lipid lowering is more important than pleiotropic effects of statins for an improvement in endothelial function and inflammatory markers
Koh <i>et al.</i> ¹⁰⁰	Thirty-two hypercholesterolaemic patients	Simvastatin, 2 month	Randomized, double-blind, placebo-controlled, parallel study	Simvastatin significantly improved endothelium-dependent dilation
Mäki-Petäjä <i>et al.</i> ¹⁰¹	Twenty patients with rheumatoid arthritis	Simvastatin or ezetimibe, 6 weeks	Randomized, double-blind, crossover study	Improvement in endothelial function
Vlachopoulos <i>et al.</i> ¹⁰²	Fifty patients with mild hypercholesterolaemia	Atorvastatin vs. placebo, 4 days of preconditioning	Randomized, placebo controlled, double-blind study	Atorvastatin effectively abrogates the endothelial dysfunction in hypercholesterolaemic patients treated with typhoid vaccination

IGT, impaired glucose tolerance; CAD, coronary artery disease.

actions and their administration has been associated with improvement in endothelial function.^{77–79} It is important, however, to appreciate that responses in FMD reflect changes in endothelial function, which are clearly only one factor influencing CV risk. While most factors, which improve endothelial function, have been shown to be of CV benefit, exceptions include antioxidant supplementation and hormone replacement therapies.^{80–82} The lack of outcome benefit in trials may be due to numerous reasons including dosing, duration of therapy, stage of disease, potential side effects of therapies, and co-morbidities.

Trials which evaluate FMD need to be part of a portfolio examining the impact of treatment on arterial function, structure, and clinical events. An important advantage of FMD as a trial endpoint is the rapid change in FMD, which occurs as a result of treatment, so that an objective measure of the impact of a novel drug can be obtained in a much shorter time (a few months) than required for a trial with CIMT or outcome endpoints. Use of FMD in this setting requires standardization of technique, reporting, and analysis. Considerable progress has been made in all of these areas. In an analysis from a single expert centre using optimal acquisition methodology and automated analysis software, low levels of variability were reported and power curves were generated to inform on clinical trial design.²² This approach has subsequently been applied successfully to a multinational, multi-centre randomized clinical trial of the cholesteryl ester transfer protein (CETP) inhibitor, dalcetrapib.

Another important opportunity for use of FMD, early in drug development programmes is the ability to identify not only benefit but also potential adverse effects on the vessel wall. A major recent disappointment has been the results of the ILLUMINATE trial, which demonstrated an increase in CV events following administration of torcetrapib, despite a substantial rise in HDL cholesterol.⁸³ This has been attributed to ‘off target’ toxicity and it is tempting to speculate that an adverse signal might have been picked up earlier by the study of the effect of torcetrapib on endothelial function. Flow-mediated dilatation trials may thus play an important role in ‘de-risking’ studies of new agents. Demonstration of lack of adverse vascular effects or even vascular benefit increases confidence in the use of such treatments in large-scale clinical trials over years.

Conclusion

Endothelial function is a key aspect of the disturbed vascular biology throughout the natural history of atherosclerosis. Evidence suggests that endothelial dysfunction is on the causal pathway for both disease evolution and destabilization of established plaques. Flow-mediated dilatation provides a non-invasive, cheap, and repeatable measure of endothelial function and has been widely used in pathophysiological studies and in large cohorts for ‘vascular epidemiology’. Advances in standardization of methodology and analysis have made it an attractive method for evaluation of interventions. In drug development programmes, improvement in FMD may provide an early rapid signal of both benefit, and the absence of vascular toxicity and complement trials with endpoints of structural arterial disease and CV outcomes that take much longer and are more expensive.

Conflict of interest: none declared.

References

- Ross R. The pathogenesis of atherosclerosis: a perspective for the 1990s. *Nature* 1993;**362**:801–809.
- Luscher TF, Vanhoutte PM. *The endothelium: modulator of cardiovascular function*. Boca Raton, FL: CRC Press, 1990, 1–215.
- Juonala M, Viikari JS, Laitinen T, Marniemi J, Helenius H, Ronnema T, Raitakari OT. Interrelations between brachial endothelial function and carotid intima-media thickness in young adults: the cardiovascular risk in young Finns study. *Circulation* 2004;**110**:2918–2923.
- Halcox JP, Donald AE, Ellins E, Witte DR, Shipley MJ, Brunner EJ, Marmot MG, Deanfield JE. Endothelial function predicts progression of carotid intima-media thickness. *Circulation* 2009;**119**:1005–1012.
- Glowinska-Olszewska B, Tolwinski J, Urban M. Relationship between endothelial dysfunction, carotid artery intima media thickness and circulating markers of vascular inflammation in obese hypertensive children and adolescents. *J Pediatr Endocrinol Metab* 2007;**20**:1125–1136.
- Kobayashi K, Akishita M, Yu W, Hashimoto M, Ohni M, Toba K. Interrelationship between non-invasive measurements of atherosclerosis: flow-mediated dilation of brachial artery, carotid intima-media thickness and pulse wave velocity. *Atherosclerosis* 2004;**173**:13–18.
- Halcox JP, Deanfield JE. Endothelial cell function testing: how does the method help us in evaluating vascular status? *Acta Paediatr Suppl* 2004;**93**:48–54.
- Furchgott RF, Zawadzki JV. The obligatory role of endothelial cells in the relaxation of arterial smooth muscle by acetylcholine. *Nature* 1980;**288**:373–376.
- Ludmer PL, Selwyn AP, Shook TL, Wayne RR, Mudge GH, Alexander RW, Ganz P. Paradoxical vasoconstriction induced by acetylcholine in atherosclerotic coronary arteries. *N Engl J Med* 1986;**315**:1046–1051.
- Celermajer DS, Sorensen KE, Gooch VM, Spiegelhalter DJ, Miller OI, Sullivan ID, Lloyd JK, Deanfield JE. Non-invasive detection of endothelial dysfunction in children and adults at risk of atherosclerosis. *Lancet* 1992;**340**:1111–1115.
- Joannides R, Haefeli WE, Linder L, Richard V, Bakkali EH, Thuillez C, Luscher TF. Nitric oxide is responsible for flow-dependent dilatation of human peripheral conduit arteries *in vivo*. *Circulation* 1995;**91**:1314–1319.
- Anderson TJ, Uehata A, Gerhard MD, Meredith IT, Knab S, Delagrèe D, Lieberman EH, Ganz P, Creager MA, Yeung AC. Close relation of endothelial function in the human coronary and peripheral circulations. *J Am Coll Cardiol* 1995;**26**:1235–1241.
- Takase B, Uehata A, Akima T, Nagai T, Nishioka T, Hamabe A, Satomura K, Ohsuzu F, Kurita A. Endothelium-dependent flow-mediated vasodilation in coronary and brachial arteries in suspected coronary artery disease. *Am J Cardiol* 1998;**82**:1535–1538.
- Corretti MC, Anderson TJ, Benjamin EJ, Celermajer D, Charbonneau F, Creager MA, Deanfield J, Drexler H, Gerhard-Herman M, Herrington D, Vallance P, Vita J, Vogel R. Guidelines for the ultrasound assessment of endothelial-dependent flow-mediated vasodilation of the brachial artery: a report of the International Brachial Artery Reactivity Task Force. *J Am Coll Cardiol* 2002;**39**:257–265.
- Papamichael CM, Aznaouridis KA, Karatzis EN, Karatzis KN, Stamatelopoulos KS, Vamvakou G, Lekakis JP, Mavrikakis ME. Effect of coffee on endothelial function in healthy subjects: the role of caffeine. *Clin Sci (Lond)* 2005;**109**:55–60.
- Leeson P, Thorne S, Donald A, Mullen M, Clarkson P, Deanfield J. Non-invasive measurement of endothelial function: effect on brachial artery dilatation of graded endothelial dependent and independent stimuli. *Heart* 1997;**78**:22–27.
- Deanfield J, Donald A, Ferri C, Giannattasio C, Halcox J, Halligan S, Lerman A, Mancia G, Oliver JJ, Pessina AC, Rizzoni D, Rossi GP, Salvetti A, Schiffrin EL, Taddei S, Webb DJ. Endothelial function and dysfunction. Part I: methodological issues for assessment in the different vascular beds: a statement by the Working Group on Endothelin and Endothelial Factors of the European Society of Hypertension. *J Hypertens* 2005;**23**:7–17.
- Herrington DM, Fan L, Drum M, Riley WA, Pusser BE, Crouse JR, Burke GL, McBurnie MA, Morgan TM, Espeland MA. Brachial flow-mediated vasodilator responses in population-based research: methods, reproducibility and effects of age, gender and baseline diameter. *J Cardiovasc Risk* 2001;**8**:319–328.
- Hashimoto M, Akishita M, Eto M, Ishikawa M, Kozaki K, Toba K, Sagara Y, Taketani Y, Orimo H, Ouchi Y. Modulation of endothelium-dependent flow-mediated dilatation of the brachial artery by sex and menstrual cycle. *Circulation* 1995;**92**:3431–3435.
- Donald AE, Charakida M, Falaschetti E, Lawlor DA, Halcox JP, Golding J, Hingorani AD, Smith GD, Deanfield JE. Determinants of vascular phenotype in a large childhood population the Avon Longitudinal Study of Parents and Children (ALSPAC). *Eur Heart J* 2010;**12**:1502–1510.

21. Guazzi M, Lenatti L, Tumminello G, Puppa S, Fiorentini C, Guazzi MD. The behaviour of the flow-mediated brachial artery vasodilatation during orthostatic stress in normal man. *Acta Physiol Scand* 2004;**182**:353–360.
22. Donald AE, Halcox JP, Charakida M, Storry C, Wallace SM, Cole TJ, Friberg P, Deanfield JE. Methodological approaches to optimize reproducibility and power in clinical studies of flow-mediated dilation. *J Am Coll Cardiol* 2008;**51**:1959–1964.
23. Berry KL, Skyrme-Jones RA, Meredith IT. Occlusion cuff position is an important determinant of the time course and magnitude of human brachial artery flow-mediated dilation. *Clin Sci (Lond)* 2000;**99**:261–267.
24. Doshi SN, Naka KK, Payne N, Jones CJ, Ashton M, Lewis MJ, Goodfellow J. Flow-mediated dilatation following wrist and upper arm occlusion in humans: the contribution of nitric oxide. *Clin Sci (Lond)* 2001;**101**:629–635.
25. Bots ML, Westerink J, Rabelink TJ, de Koning EJ. Assessment of flow-mediated vasodilatation (FMD) of the brachial artery: effects of technical aspects of the FMD measurement on the FMD response. *Eur Heart J* 2005;**26**:363–368.
26. Gori T, Grotti S, Dragoni S, Lisi M, Di SG, Sonnati S, Fineschi M, Parker JD. Assessment of vascular function: flow-mediated constriction complements the information of flow-mediated dilatation. *Heart* 2010;**96**:141–147.
27. Deanfield JE, Halcox JP, Rabelink TJ. Endothelial function and dysfunction: testing and clinical relevance. *Circulation* 2007;**115**:1285–1295.
28. Eskurza I, Monahan KD, Robinson JA, Seals DR. Effect of acute and chronic ascorbic acid on flow-mediated dilatation with sedentary and physically active human ageing. *J Physiol* 2004;**556**:315–324.
29. Sorensen KE, Celermajer DS, Georgakopoulos D, Hatcher G, Betteridge DJ, Deanfield JE. Impairment of endothelium-dependent dilation is an early event in children with familial hypercholesterolemia and is related to the lipoprotein(a) level. *J Clin Invest* 1994;**93**:50–55.
30. Brunner H, Cockcroft JR, Deanfield J, Donald A, Ferrannini E, Halcox J, Kiowski W, Luscher TF, Mancia G, Natali A, Oliver JJ, Pessina AC, Rizzoni D, Rossi GP, Salvetti A, Spieker LE, Taddei S, Webb DJ. Endothelial function and dysfunction. Part II: association with cardiovascular risk factors and diseases. A statement by the Working Group on Endothelins and Endothelial Factors of the European Society of Hypertension. *J Hypertens* 2005;**23**:233–246.
31. Quyyumi AA, Mulcahy D, Andrews NP, Husain S, Panza JA, Cannon RO III. Coronary vascular nitric oxide activity in hypertension and hypercholesterolemia. Comparison of acetylcholine and substance P. *Circulation* 1997;**95**:104–110.
32. Lupattelli G, Lombardini R, Schillaci G, Ciuffetti G, Marchesi S, Siepi D, Mannarino E. Flow-mediated vasoactivity and circulating adhesion molecules in hypertriglyceridemia: association with small, dense LDL cholesterol particles. *Am Heart J* 2000;**140**:521–526.
33. Kuvin JT, Ramet ME, Patel AR, Pandian NG, Mendelsohn ME, Karas RH. A novel mechanism for the beneficial vascular effects of high-density lipoprotein cholesterol: enhanced vasorelaxation and increased endothelial nitric oxide synthase expression. *Am Heart J* 2002;**144**:165–172.
34. Lupattelli G, Marchesi S, Lombardini R, Siepi D, Bagaglia F, Pirro M, Ciuffetti G, Schillaci G, Mannarino E. Mechanisms of high-density lipoprotein cholesterol effects on the endothelial function in hyperlipemia. *Metabolism* 2003;**52**:1191–1195.
35. Lundman P, Eriksson MJ, Stuhlinger M, Cooke JP, Hamsten A, Tornvall P. Mild-to-moderate hypertriglyceridemia in young men is associated with endothelial dysfunction and increased plasma concentrations of asymmetric dimethylarginine. *J Am Coll Cardiol* 2001;**38**:111–116.
36. Gudmundsson GS, Sinkey CA, Chenard CA, Stumbo PJ, Haynes WG. Resistance vessel endothelial function in healthy humans during transient postprandial hypertriglyceridemia. *Am J Cardiol* 2000;**85**:381–385.
37. Keogh JB, Grieger JA, Noakes M, Clifton PM. Flow-mediated dilatation is impaired by a high-saturated fat diet but not by a high-carbohydrate diet. *Arterioscler Thromb Vasc Biol* 2005;**25**:1274–1279.
38. Davis N, Katz S, Wylie-Rosett J. The effect of diet on endothelial function. *Cardiol Rev* 2007;**15**:62–66.
39. Clarkson P, Celermajer DS, Donald AE, Sampson M, Sorensen KE, Adams M, Yue DK, Betteridge DJ, Deanfield JE. Impaired vascular reactivity in insulin-dependent diabetes mellitus is related to disease duration and low density lipoprotein cholesterol levels. *J Am Coll Cardiol* 1996;**28**:573–579.
40. Tesfamariam B, Cohen RA. Free radicals mediate endothelial cell dysfunction caused by elevated glucose. *Am J Physiol* 1992;**263**:H321–H326.
41. Fard A, Tuck CH, Donis JA, Sciacca R, Di Tullio MR, Wu HD, Bryant TA, Chen NT, Torres-Tamayo M, Ramasamy R, Berglund L, Ginsberg HN, Homma S, Cannon PJ. Acute elevations of plasma asymmetric dimethylarginine and impaired endothelial function in response to a high-fat meal in patients with type 2 diabetes. *Arterioscler Thromb Vasc Biol* 2000;**20**:2039–2044.
42. Schalkwijk CG, Stehouwer CD. Vascular complications in diabetes mellitus: the role of endothelial dysfunction. *Clin Sci (Lond)* 2005;**109**:143–159.
43. Dogra G, Rich L, Stanton K, Watts GF. Endothelium-dependent and independent vasodilatation studies at normoglycaemia in type I diabetes mellitus with and without microalbuminuria. *Diabetologia* 2001;**44**:593–601.
44. Title LM, Cummings PM, Giddens K, Nassar BA. Oral glucose loading acutely attenuates endothelium-dependent vasodilation in healthy adults without diabetes: an effect prevented by vitamins C and E. *J Am Coll Cardiol* 2000;**36**:2185–2191.
45. Major-Pedersen A, Ihlemann N, Hermann TS, Christiansen B, Dominguez H, Kveiborg B, Nielsen DB, Svendsen OL, Kober L, Torp-Pedersen C. Effects of oral glucose load on endothelial function and on insulin and glucose fluctuations in healthy individuals. *Exp Diabetes Res* 2008;**2008**:672021.
46. Taddei S, Virdis A, Ghiadoni L, Salvetti A. Endothelial dysfunction in hypertension: fact or fancy? *J Cardiovasc Pharmacol* 1998;**32**(Suppl 3):S41–S47.
47. Taddei S, Virdis A, Ghiadoni L, Salvetti G, Salvetti A. Endothelial dysfunction in hypertension. *J Nephrol* 2000;**13**:205–210.
48. Lacy F, O'Connor DT, Schmid-Schonbein GW. Plasma hydrogen peroxide production in hypertensives and normotensive subjects at genetic risk of hypertension. *J Hypertens* 1998;**16**:291–303.
49. Taddei S, Virdis A, Ghiadoni L, Salvetti A. Vascular effects of endothelin-1 in essential hypertension: relationship with cyclooxygenase-derived endothelium-dependent contracting factors and nitric oxide. *J Cardiovasc Pharmacol* 2000;**35**:S37–S40.
50. Goonasekera CD, Dillon MJ. Vascular endothelium and nitric oxide in childhood hypertension. *Pediatr Nephrol* 1998;**12**:676–689.
51. Celermajer DS, Sorensen KE, Georgakopoulos D, Bull C, Thomas O, Robinson J, Deanfield JE. Cigarette smoking is associated with dose-related and potentially reversible impairment of endothelium-dependent dilation in healthy young adults. *Circulation* 1993;**88**:2149–2155.
52. Neunteufl T, Heher S, Kostner K, Mitulovic G, Lehr S, Khoschorur G, Schmid RW, Maurer G, Stefanelli T. Contribution of nicotine to acute endothelial dysfunction in long-term smokers. *J Am Coll Cardiol* 2002;**39**:251–256.
53. Mayhan WG, Patel KP. Effect of nicotine on endothelium-dependent arteriolar dilatation in vivo. *Am J Physiol* 1997;**272**:H2337–H2342.
54. Zhang WZ, Venardos K, Chin-Dusting J, Kaye DM. Adverse effects of cigarette smoke on NO bioavailability: role of arginine metabolism and oxidative stress. *Hypertension* 2006;**48**:278–285.
55. Morrow JD, Frei B, Longmire AW, Gaziano JM, Lynch SM, Shyr Y, Strauss WE, Oates JA, Roberts LJ. Increase in circulating products of lipid peroxidation (F₂-isoprostanes) in smokers. Smoking as a cause of oxidative damage. *N Engl J Med* 1995;**332**:1198–1203.
56. Rohani M, Agewall S. Oral snuff impairs endothelial function in healthy snuff users. *J Intern Med* 2004;**255**:379–383.
57. Jarvisalo MJ, Hutri-Kahonen N, Juonala M, Mikkila V, Rasanen L, Lehtimaki T, Viikari J, Raitakari OT. Breast feeding in infancy and arterial endothelial function later in life. The Cardiovascular Risk in Young Finns Study. *Eur J Clin Nutr* 2009;**63**:640–645.
58. Hingorani AD, Cross J, Kharbanda RK, Mullen MJ, Bhagat K, Taylor M, Donald AE, Palacios M, Griffin GE, Deanfield JE, MacAllister RJ, Vallance P. Acute systemic inflammation impairs endothelium-dependent dilatation in humans. *Circulation* 2000;**102**:994–999.
59. Charakida M, Donald AE, Terese M, Leary S, Halcox JP, Ness A, Davey SG, Golding J, Friberg P, Klein NJ, Deanfield JE. Endothelial dysfunction in childhood infection. *Circulation* 2005;**111**:1660–1665.
60. Tonetti MS, D'Aiuto F, Nibali L, Donald A, Storry C, Parkar M, Suvan J, Hingorani AD, Vallance P, Deanfield J. Treatment of periodontitis and endothelial function. *N Engl J Med* 2007;**356**:911–920.
61. Rohani M, Jøgestrand T, Kallner G, Jussila R, Agewall S. Morphological changes rather than flow-mediated dilatation in the brachial artery are better indicators of the extent and severity of coronary artery disease. *J Hypertens* 2005;**23**:1397–1402.
62. Halcox JP, Schenke WH, Zalos G, Mincemoyer R, Prasad A, Waclawiw MA, Nour KR, Quyyumi AA. Prognostic value of coronary vascular endothelial dysfunction. *Circulation* 2002;**106**:653–658.
63. Celermajer DS, Sorensen K, Ryalls M, Robinson J, Thomas O, Leonard JV, Deanfield JE. Impaired endothelial function occurs in the systemic arteries of children with homozygous homocystinuria but not in their heterozygous parents. *J Am Coll Cardiol* 1993;**22**:854–858.
64. Inaba Y, Chen JA, Bergmann SR. Prediction of future cardiovascular outcomes by flow-mediated vasodilatation of brachial artery: a meta-analysis. *Int J Cardiovasc Imaging* 2010;**26**:631–640.
65. Yeboah J, Crouse JR, Hsu FC, Burke GL, Herrington DM. Brachial flow-mediated dilation predicts incident cardiovascular events in older adults: the Cardiovascular Health Study. *Circulation* 2007;**115**:2390–2397.
66. Yeboah J, Folsom AR, Burke GL, Johnson C, Polak JF, Post W, Lima JA, Crouse JR, Herrington DM. Predictive value of brachial flow-mediated dilation

- for incident cardiovascular events in a population-based study: the multi-ethnic study of atherosclerosis. *Circulation* 2009;**120**:502–599.
67. Meyer AA, Kundt G, Lenschow U, Schuff-Werner P, Kienast W. Improvement of early vascular changes and cardiovascular risk factors in obese children after a six-month exercise program. *J Am Coll Cardiol* 2006;**48**:1865–1870.
 68. Dod HS, Bhardwaj R, Sajja V, Weidner G, Hobbs GR, Konat GW, Manivannan S, Gharib W, Warden BE, Nanda NC, Beto RJ, Ornish D, Jain AC. Effect of intensive lifestyle changes on endothelial function and on inflammatory markers of atherosclerosis. *Am J Cardiol* 2010;**105**:362–367.
 69. Habib P, Scrocco JD, Terek M, Vanek V, Mikolich JR. Effects of bariatric surgery on inflammatory, functional and structural markers of coronary atherosclerosis. *Am J Cardiol* 2009;**104**:1251–1255.
 70. Sturm W, Tschoner A, Engl J, Kaser S, Laimer M, Ciardi C, Klaus A, Weiss H, Sandhofer A, Patsch JR, Ebenbichler CF. Effect of bariatric surgery on both functional and structural measures of premature atherosclerosis. *Eur Heart J* 2009;**30**:2038–2043.
 71. Asselbergs FW, van der HP, van Roon AM, Hillege HL, de Jong PE, Gans RO, Smit AJ, van Gilst WH. Long-term effects of pravastatin and fosinopril on peripheral endothelial function in albuminuric subjects. *Atherosclerosis* 2008;**196**:349–355.
 72. Ray KK, Cannon CP. Intensive statin therapy in acute coronary syndromes: clinical benefits and vascular biology. *Curr Opin Lipidol* 2004;**15**:637–643.
 73. Tsiara S, Elisaf M, Mikhailidis DP. Early vascular benefits of statin therapy. *Curr Med Res Opin* 2003;**19**:540–556.
 74. Ceconi C, Fox KM, Remme WJ, Simoons ML, Bertrand M, Parrinello G, Klufft C, Blann A, Cokkinos D, Ferrari R. ACE inhibition with perindopril and endothelial function. Results of a substudy of the EUROPA study: PERTINENT. *Cardiovasc Res* 2007;**73**:237–246.
 75. Yazici D, Yavuz DG, Unsalan S, Toprak A, Yuksel M, Deyneli O, Aydin H, Tezcan H, Rollas S, Akalin S. Temporal effects of low-dose ACE inhibition on endothelial function in Type 1 diabetic patients. *J Endocrinol Invest* 2007;**30**:726–733.
 76. Taddei S, Virdis A, Ghiadoni L, Magagna A, Pasini AF, Garbin U, Cominacini L, Salvetti A. Effect of calcium antagonist or beta blockade treatment on nitric oxide-dependent vasodilation and oxidative stress in essential hypertensive patients. *J Hypertens* 2001;**19**:1379–1386.
 77. Heitzer T, Rudolph V, Schwedhelm E, Karstens M, Sydow K, Ortak M, Tschentscher P, Meinertz T, Boger R, Baldus S. Clopidogrel improves systemic endothelial nitric oxide bioavailability in patients with coronary artery disease: evidence for antioxidant and antiinflammatory effects. *Arterioscler Thromb Vasc Biol* 2006;**26**:1648–1652.
 78. Heitzer T, Ollmann I, Koke K, Meinertz T, Munzel T. Platelet glycoprotein IIb/IIIa receptor blockade improves vascular nitric oxide bioavailability in patients with coronary artery disease. *Circulation* 2003;**108**:536–541.
 79. Husain S, Andrews NP, Mulcahy D, Panza JA, Quyyumi AA. Aspirin improves endothelial dysfunction in atherosclerosis. *Circulation* 1998;**97**:716–720.
 80. Dotan Y, Pinchuk I, Lichtenberg D, Leshno M. Decision analysis supports the paradigm that indiscriminate supplementation of vitamin E does more harm than good. *Arterioscler Thromb Vasc Biol* 2009;**29**:1304–1309.
 81. Antoniadis C, Tousoulis D, Tentolouris C, Toutouzias P, Stefanadis C. Oxidative stress, antioxidant vitamins, and atherosclerosis. From basic research to clinical practice. *Herz* 2003;**28**:628–638.
 82. Arnal JF, Scarabin PY, Tremollieres F, Laurell H, Gourdy P. Estrogens in vascular biology and disease: where do we stand today? *Curr Opin Lipidol* 2007;**18**:554–560.
 83. Barter PJ, Caulfield M, Eriksson M, Grundy SM, Kastelein JJ, Komajda M, Lopez-Sendon J, Mosca L, Tardif JC, Waters DD, Shear CL, Revkin JH, Buhr KA, Fisher MR, Tall AR, Brewer B. Effects of torcetrapib in patients at high risk for coronary events. *N Engl J Med* 2007;**357**:2109–2122.
 84. Neunteufl T, Heher S, Katzenschlager R, Wolf G, Kostner K, Maurer G, Weidinger F. Late prognostic value of flow-mediated dilation in the brachial artery of patients with chest pain. *Am J Cardiol* 2000;**86**:207–210.
 85. Gokce N, Keaney JF Jr, Hunter LM, Watkins MT, Nedeljkovic ZS, Menzoian JO, Vita JA. Predictive value of noninvasively determined endothelial dysfunction for long-term cardiovascular events in patients with peripheral vascular disease. *J Am Coll Cardiol* 2003;**41**:1769–1775.
 86. Huang AL, Silver AE, Shvenke E, Schopfer DW, Jahangir E, Titas MA, Shpilman A, Menzoian JO, Watkins MT, Raffetto JD, Gibbons G, Woodson J, Shaw PM, Dhady M, Eberhardt RT, Keaney JF Jr, Gokce N, Vita JA. Predictive value of reactive hyperemia for cardiovascular events in patients with peripheral arterial disease undergoing vascular surgery. *Arterioscler Thromb Vasc Biol* 2007;**27**:2113–2119.
 87. Brevetti G, Silvestro A, Schiano V, Chiariello M. Endothelial dysfunction and cardiovascular risk prediction in peripheral arterial disease: additive value of flow-mediated dilation to ankle-brachial pressure index. *Circulation* 2003;**108**:2093–2098.
 88. Modena MG, Bonetti L, Coppi F, Bursi F, Rossi R. Prognostic role of reversible endothelial dysfunction in hypertensive postmenopausal women. *J Am Coll Cardiol* 2002;**40**:505–510.
 89. Chan SY, Mancini GB, Kuramoto L, Schulzer M, Frohlich J, Ignaszewski A. The prognostic importance of endothelial dysfunction and carotid atheroma burden in patients with coronary artery disease. *J Am Coll Cardiol* 2003;**42**:1037–1043.
 90. Fathi R, Haluska B, Isbel N, Short L, Marwick TH. The relative importance of vascular structure and function in predicting cardiovascular events. *J Am Coll Cardiol* 2004;**43**:616–623.
 91. Hu R, Wang WQ, Lau CP, Tse HF. Gender differences on brachial flow-mediated dilation and carotid intima-media thickness for prediction of spontaneous cardiovascular events. *Clin Cardiol* 2008;**31**:525–530.
 92. Flammer AJ, Hermann F, Wiesli P, Schwegler B, Chenevard R, Hurlimann D, Sudano I, Gay S, Neidhart M, Riesen W, Ruschitzka F, Luscher TF, Noll G, Lehmann R. Effect of losartan, compared with atenolol, on endothelial function and oxidative stress in patients with type 2 diabetes and hypertension. *J Hypertens* 2007;**25**:785–791.
 93. Koh KK, Quon MJ, Lee Y, Han SH, Ahn JY, Chung WJ, Kim JA, Shin EK. Additive beneficial cardiovascular and metabolic effects of combination therapy with ramipril and candesartan in hypertensive patients. *Eur Heart J* 2007;**28**:1440–1447.
 94. Flammer AJ, Sudano I, Hermann F, Gay S, Forster A, Neidhart M, Kunzler P, Enseleit F, Periat D, Hermann M, Nussberger J, Luscher TF, Corti R, Noll G, Ruschitzka F. Angiotensin-converting enzyme inhibition improves vascular function in rheumatoid arthritis. *Circulation* 2008;**117**:2262–2269.
 95. Morimoto S, Yano Y, Maki K, Iwasaka T. Renal and vascular protective effects of cilnidipine in patients with essential hypertension. *J Hypertens* 2007;**25**:2178–2183.
 96. Hamilton SJ, Chew GT, Watts GF. Coenzyme Q10 improves endothelial dysfunction in statin-treated type 2 diabetic patients. *Diabetes Care* 2009;**32**:810–812.
 97. Rawlings R, Nohria A, Liu PY, Donnelly J, Creager MA, Ganz P, Selwyn A, Liao JK. Comparison of effects of rosuvastatin (10 mg) versus atorvastatin (40 mg) on rho kinase activity in caucasian men with a previous atherosclerotic event. *Am J Cardiol* 2009;**103**:437–441.
 98. Ostad MA, Eggeling S, Tschentscher P, Schwedhelm E, Boger R, Wenzel P, Meinertz T, Munzel T, Warnholtz A. Flow-mediated dilation in patients with coronary artery disease is enhanced by high dose atorvastatin compared to combined low dose atorvastatin and ezetimibe: results of the CEZAR study. *Atherosclerosis* 2009;**205**:227–232.
 99. Settergren M, Bohm F, Ryden L, Pernow J. Cholesterol lowering is more important than pleiotropic effects of statins for endothelial function in patients with dysglycaemia and coronary artery disease. *Eur Heart J* 2008;**29**:1753–1760.
 100. Koh KK, Quon MJ, Han SH, Lee Y, Ahn JY, Kim SJ, Koh Y, Shin EK. Simvastatin improves flow-mediated dilation but reduces adiponectin levels and insulin sensitivity in hypercholesterolemic patients. *Diabetes Care* 2008;**31**:776–782.
 101. Maki-Petaja KM, Booth AD, Hall FC, Wallace SM, Brown J, McEniery CM, Wilkinson IB. Ezetimibe and simvastatin reduce inflammation, disease activity, and aortic stiffness and improve endothelial function in rheumatoid arthritis. *J Am Coll Cardiol* 2007;**50**:852–858.
 102. Vlachopoulos C, Aznaouridis K, Dagher A, Vasiladiou C, Masoura C, Stefanadi E, Skoumas J, Pitsavos C, Stefanadis C. Protective effect of atorvastatin on acute systemic inflammation-induced endothelial dysfunction in hypercholesterolaemic subjects. *Eur Heart J* 2007;**28**:2102–2109.